

# Introduction of China

## 1. About school

### A. Students' Uniforms

- All students have uniforms
- Primary's is different from high school's
- Public school has same uniforms
- For different seasons
- Only on Monday is required



## B. Courses

- Chinese, Math, English
- Science, Art, Music, PE, Counseling
- 7 classes everyday, each class 35min;  
10min break between classes
  - Morning: 8:00 -11:30 (4 classes)
  - Afternoon: 13:00 -15:20 (3 classes)
- 2 semester in one year
  - 1<sup>st</sup> semester: Sep. 1<sup>st</sup> – Jan.15<sup>th</sup>
  - 2<sup>nd</sup> semester: Feb. 15<sup>th</sup> – June 30<sup>th</sup>

## C. Holidays

- Summer Holiday (July - August)
- Winter Holiday ( Jan.15 – Feb.15)
- International Labor Day (May 1<sup>st</sup>)
- Children Day (June 1<sup>st</sup> )
- National Day (October 1<sup>st</sup>)
- New Year's Day (January 1<sup>st</sup> )
- Spring Festival (Dumpling)
- Dragon Boat Festival (Rice Dumpling)
- Middle Autumn Festival (Moon Cake)



Dumpling (Jiaozi)

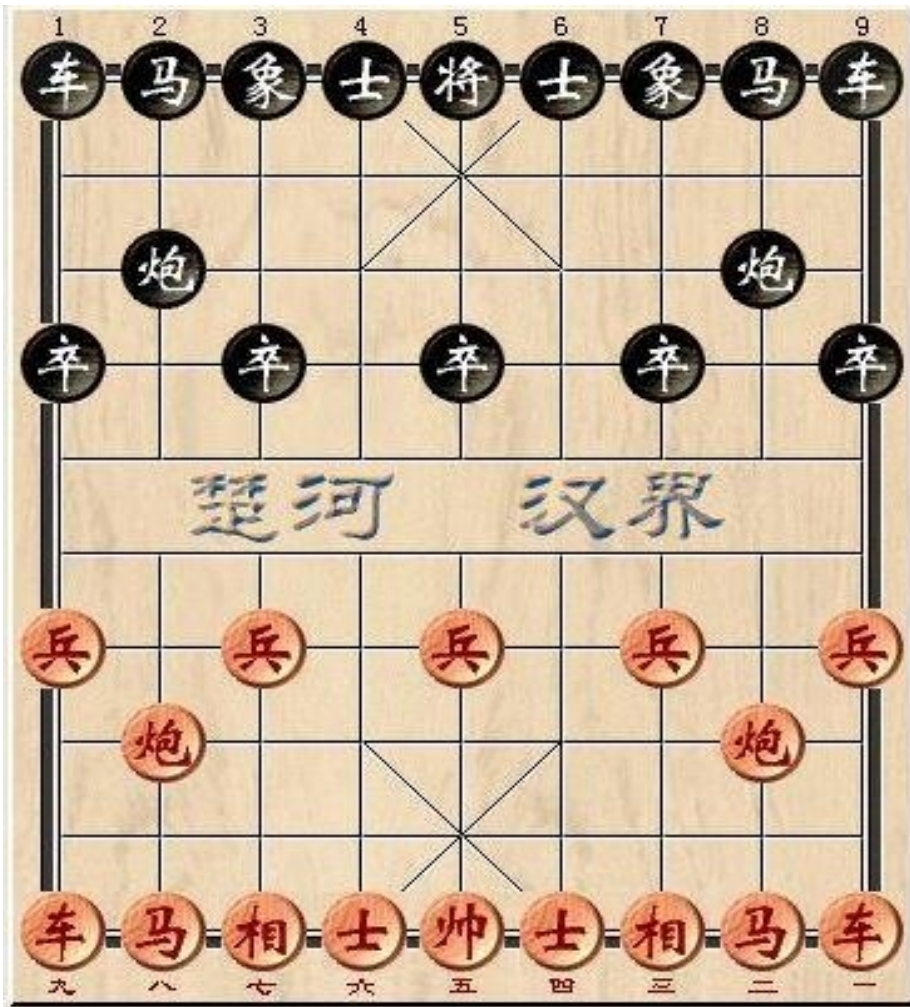
Rice Dumpling



Moon Cake

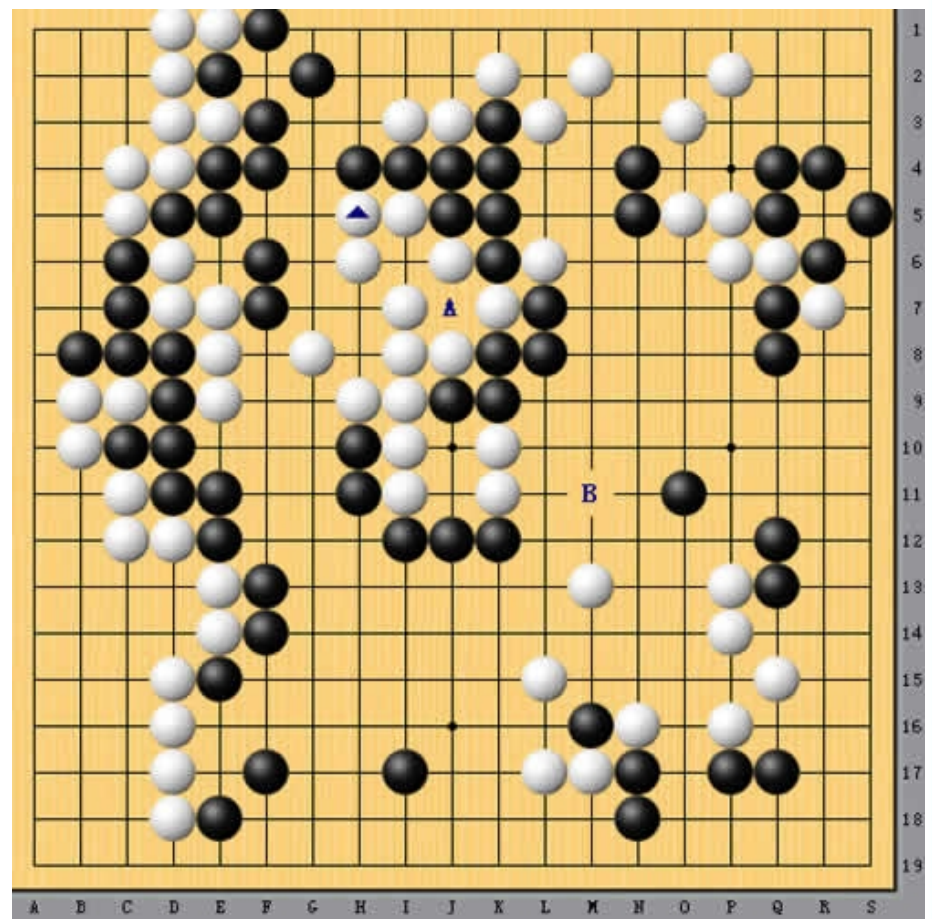
## D. Games and Sports

- Chinese Chess, International Chess
- Go (Weiqi), Chinese Checkers
- Rope Skipping, Shuttlecock Kicking
- Long Jump, High Jump, Running, Push Up
- Basketball, Ping-pong, Volleyball, Football
- Badminton, Swimming, Tug-of-war
- Roller Skating, Kite Flying, Playing Frisbee
- Chinese Gongfu, Taekwondo ,Fishing



Chinese Chess

## The game of Go





Chinese Checkers



Chinese Gongfu



Rope Skipping

Tug-of-war



## E. Common foods

- Main food: rice, noodles, steam bread
- Meat: pork, chicken, duck, beef,
- Seafood: fish, shrimp, seat-angle, seaweed
- Fresh vegetables: stir fry
- Soy products: toufu, soy milk
- Soup: meat, fish, vegetable, egg, toufu
- Fruit: apple, banana, orange, pear, grape, watermelon, pineapple





Steam Bread

Baozi



## 2. About Shanghai

### A. Huge city

- Shang – ' 上 ' – up, hai – ' 海 ' - sea
- Location: east China
- Population: over 23 million (2010)
- Area: 6,340.5 km<sup>2</sup> (2,448.1 sq mi)
- Education: independent education system
  - about 871,000 primary school students
  - over 1,200 primary and 850 middle schools
  - over 30 universities and colleges.











## B. Fast-food restaurants

McDonald's, KFC, Pizza Hut, Subway

Japanese, Korean, Mongolian, Indian

Chinese fast-food, quick snack

## C. Traffic tools

- Most people walk, ride bicycle, motorcycle
- Bus, subway, taxi, Maglev (Magnetic Levitation Train)
- More private cars
- Long trip by train, plane



Magnetic Levitation Train



Apartment







## D. Living

- Apartment
- House

## E. Sister cities in US

- San Francisco - 1979
- Chicago -1985
- Winston-Salem - 2006

### 3. About China

#### A. Ruler : The Communist Party of China



Chairman: Jintao Hu



Premier: Jiabao Wen

## B. Chinese money

## C. Traditional culture

- Clothing: Tang suit, Qipao
- Chinese calligraphy, Chinese painting
- Paper cutting, embroidery, silk
- Chinese Gongfu tea



Tang suit



Chipao



## Chinese Calligraphy





## Chinese Painting



Paper Cutting



Paper Cutting



Embroider



Chinese Gongfu Tea

**Thank You!**